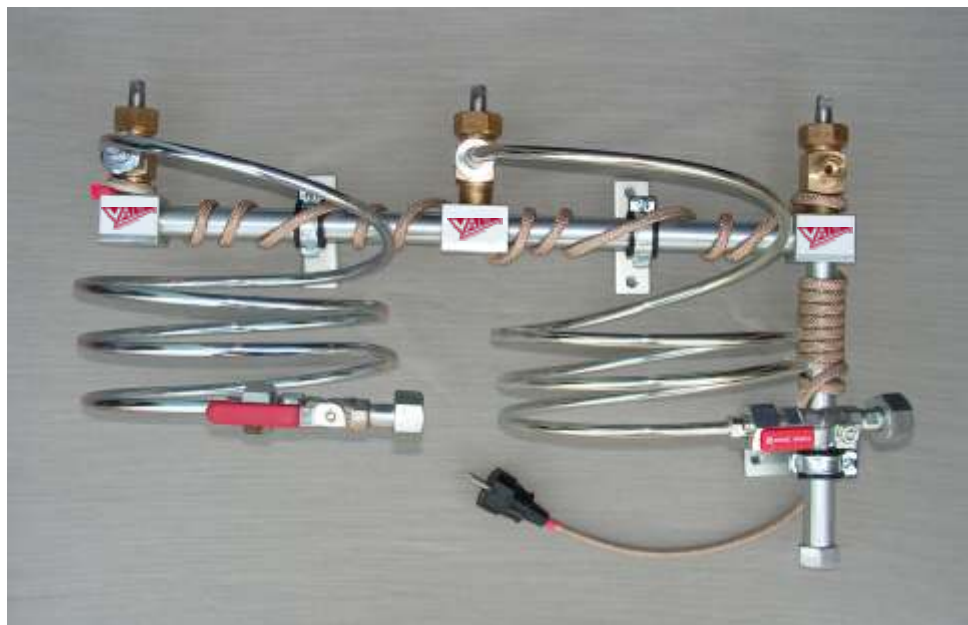


MANIFOLD

ZV-1 ZV-2 ZV-3



Manifold acts as the collecting line and it is used to connect 1, 2, 3, 4 or more chlorine cylinders and / or containers in the chlorination system. Its construction also provides easy separation of impurities, and also, by means of special heating elements, allows rapid transfer of liquid chlorine into the gaseous phase.

COMPONENTS

- Chlorine valves
- Flexible tubes
- Ball valves 3 / 8"
- Manifold heater (220V ili 24V)
- Wall brackets
- Pressure gauge (on request)

